

Bakfiets.nl



has changed the look of cycling in the Netherlands, United Kingdom and many other countries, their concept of carrying children in a cargo bike was innovative and is now accepted world-wide as an alternative and green form of transport. For many parents using a Bakfiets.nl Cargobike or Cargotrike is a liberating and life changing experience especially on the school run in busy towns and cities where the volume of traffic has become a big problem. Since the first model there has been continuing development to enable you to carry babies, children, dogs, shopping and cargo with ease and in safety.

→ CargoBike Classic Short

The CargoBike Classic Short is most similar to the original model, easy to steer and with a low centre of gravity and wooden box which children can easily get in and out of. The unique four footed stand gives complete stability when loading and parking. Also the magnetic safety belts are very easy in use. CargoBike Short: length 228cm x width 63cm.



Colours: gloss black/bright red/turquoise/matt granite

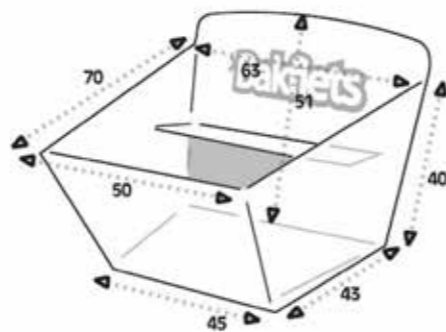


→ Gear options available

- NN3d:** Nexus 3 speed hub gears, rollerbrakes and hub dynamo
- NN7d:** Nexus 7 speed hub gears, rollerbrakes and hub dynamo
- NN8d:** Nexus 8 speed hub gears, rollerbrakes and hub dynamo
- NR8d:** Nexus 8 speed, rear coaster brake, front rollerbrake and hub dynamo
- NNid:** NuVinci continuously variable hub gear, rollerbrakes and hub dynamo

→ Also available with Shimano Steps electric assist see pages 12 to 22

→ Accessories (see rear pages)



→ CargoBike Cruiser Short

The CargoBike Cruiser Short is a stylish and sporty version of the Classic model but with fat tyres for comfort, broad mudguards in matching frame colour, Brooks Aged leather saddle and handlebar grips, a retro style 35 lux headlight and Plateo rear light both powered by the hub dynamo and with standlight function. There is no rear carrier rack fitted. Length 228cm x width 63cm.



Colours: gloss black/bright red/turquoise/matt granite

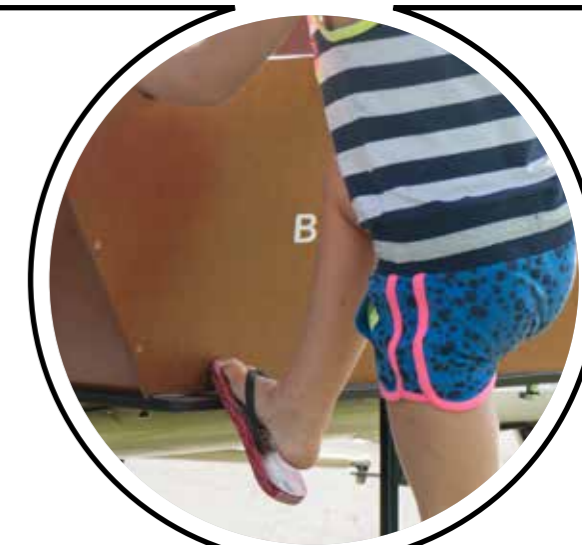


→ Gear options available

- NN3d:** Nexus 3 speed hub gears, rollerbrakes and hub dynamo
- NN7d:** Nexus 7 speed hub gears, rollerbrakes and hub dynamo
- NN8d:** Nexus 8 speed hub gears, rollerbrakes and hub dynamo
- NR8d:** Nexus 8 speed, rear coaster brake, front rollerbrake and hub dynamo
- NNid:** NuVinci continuously variable hub gear, rollerbrakes and hub dynamo

→ Also available with Shimano Steps electric assist see pages 12 to 22

→ Accessories (see rear pages)



→ CargoBike Classic Long

The CargoBike Classic Long is identical to the short but with a stretched frame and box. It has the space to carry up to 3 children by adding an extra bench at the front or 2 children on the rear bench and a baby in a Maxi Cosy or white woolly baby/toddler seat in the front area. You can also carry a dog with a top cage or add a door in the side of the box for easy entry.
Length 253cm x width 63cm

→  Colours: gloss black/bright red/petrolblue/matt black/matt granite/ivory/matt blue



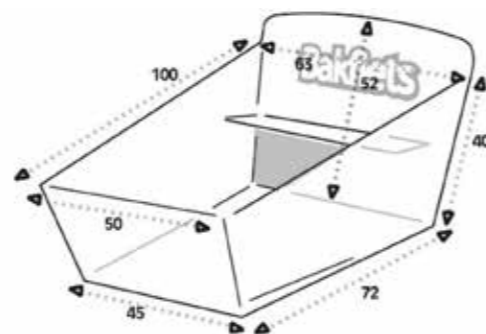
The bike pictured is with the optional black box

→ Gear options available

- NN3d:** Nexus 3 speed hub gears, rollerbrakes and hub dynamo
- NN7d:** Nexus 7 speed hub gears, rollerbrakes and hub dynamo
- NN8d:** Nexus 8 speed hub gears, rollerbrakes and hub dynamo
- NR8d:** Nexus 8 speed, rear coaster brake, front rollerbrake and hub dynamo
- NNid:** NuVinci continuously variable hub gear, rollerbrakes and hub dynamo

→ Also available with Shimano Steps electric assist see pages 12

→ Accessories (see rear pages)



→ CargoBike Cruiser Long

The CargoBike Cruiser long is a stylish and sporty version of the Classic model but with fat tyres for comfort, broad mudguards in matching frame colour, Brooks Aged leather saddle and handlebar grips, a retro style 35 lux headlight and Plateo rear light both powered by the hub dynamo and with standlight function. There is no rear carrier rack fitted.
Length 253cm x width 63cm

→  Colours: gloss black/bright red/petrolblue/matt black/matt granite/ivory/matt blue



→ Gear options available

- NN3d:** Nexus 3 speed hub gears, rollerbrakes and hub dynamo
- NN7d:** Nexus 7 speed hub gears, rollerbrakes and hub dynamo
- NN8d:** Nexus 8 speed hub gears, rollerbrakes and hub dynamo
- NR8d:** Nexus 8 speed, rear coaster brake, front rollerbrake and hub dynamo
- NNid:** NuVinci continuously variable hub gear, rollerbrakes and hub dynamo

→ Also available with Shimano Steps electric assist see pages 12 to 22

→ Accessories (see rear pages)





→ CargoBike XL

A CargoBike can be of great value for companies. Whether you work in parcel delivery, cleaning or maintenance you'll always have your bike and tools close by as there's no hassle with parking. The CargoBike can be used as a marketing tool as well: it shows your company is green and flexible. On this page you'll find CargoBikes specially designed to carry whatever loads you need to transport.

The CargoBike XL is equipped with an extra long frame, so there is even more space for your goods. The XL can also be delivered with just a baseplate so you can mount your own construction to it to suit your needs.

We also provide the XL with a simple rack, or a complete flightcase so you can start delivering your parcels immediately.



Colour:gloss black



→ Gear options available

NN7d: Shimano Nexus 7 speed hub gears, rollerbrakes and hub dynamo

NN8d: Shimano Nexus 8 speed hub gears, rollerbrakes and hub dynamo

NN8d: NuVinci continuously variable hub gear, rollerbrakes and hub dynamo

Also Available without flatbed or with an flightcase box

→ Accessories (see rear pages)





→ CargoTrike Classic Narrow

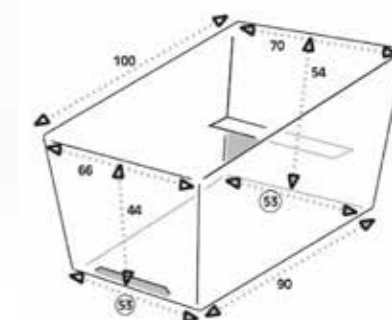
The Cargotrike Classic Narrow is very robust and strong design that offers great stability when parked and loading, the big capacity box is standard equipped with 2 benches and seatbelts for 4 children but will also take babies/toddlers in a Maxi Cosy or baby/toddler seat(s).

To keep them dry there is the option of a fixed tent in colours red, black or crème.

Length 210cm x width 85cm
bottom surface: 86 x 54 cm



Colours: gloss black/bright red/turquoise/matt granite



→ Gear options available

NN3d: Nexus 3 speed hub gears, rollerbrakes and hub dynamo

NN7d: Nexus 7 speed hub gears, rollerbrakes and hub dynamo

NN8d: Nexus 8 speed hub gears, rollerbrakes and hub dynamo

NR8d: Nexus 8 speed, rear coaster brake, front rollerbrake and hub dynamo

NNid: NuVinci continuously variable hub gear, rollerbrakes and hub dynamo

→ Also available with Shimano Steps electric assist see pages 12 to 22

→ Accessories (see rear pages)



→ CargoTrike Classic Wide

The CargoTrike Classic wide is similar in length to the narrow but is 10cm wider so offering even more space for freight or children. It can be fitted with benches and seat belts in the length to increase seating for up to 6 children. There is also a handy step to help them get in and out of the box
 Length 210cm x width 95cm
 bottom surface: 86 x 65 cm

→ ● ● ● ●
 Colours: gloss black/bright red/turquoise/matt granite



→ CargoTrike Cruiser Wide

The CargoTrike Cruiser Wide is a stylish and sporty version of the Classic model but with fat tyres for comfort, broad mudguards in matching frame colour, Brooks Aged leather saddle and handlebar grips, a retro style 35 lux headlight and Plateo rear light both powered by the hub dynamo and with standlight function. There is no rear carrier rack fitted.
 Length 210cm x width 95cm
 bottom surface: 86 x 65 cm

→ ● ● ● ●
 Colours: gloss black/bright red/turquoise/matt granite

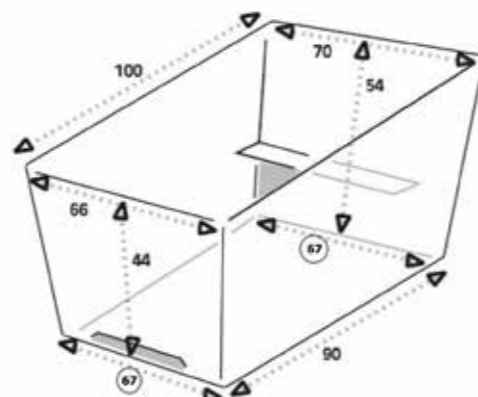


→ Gear options available

- NN3d:** Nexus 3 speed hub gears, rollerbrakes and hub dynamo
- NN7d:** Nexus 7 speed hub gears, rollerbrakes and hub dynamo
- NN8d:** Nexus 8 speed hub gears, rollerbrakes and hub dynamo
- NR8d:** Nexus 8 speed, rear coaster brake, front rollerbrake and hub dynamo
- NNid:** NuVinci continuously variable hub gear, rollerbrakes and hub dynamo

→ Also available with Shimano Steps electric see pages 12 to 22

→ Accessories (see rear pages)



→ Gear options available

- NN3d:** Nexus 3 speed hub gears, rollerbrakes and hub dynamo
- NN7d:** Nexus 7 speed hub gears, rollerbrakes and hub dynamo
- NN8d:** Nexus 8 speed hub gears, rollerbrakes and hub dynamo
- NR8d:** Nexus 8 speed, rear coaster brake, front rollerbrake and hub dynamo
- NNid:** NuVinci continuously variable hub gear, rollerbrakes and hub dynamo

→ Also available with Shimano Steps electric assist see pages 12 to 22

→ Accessories (see rear pages)



→ Electric Assist

A selection of the models are available with a sophisticated but easy to operate crank driven electric assist motor, the battery can be rear rack or box mounted and is removable.

→ Shimano STEPS

One of the big names in the cycling manufacturing world: Shimano, have developed a reliable light but powerful bottom bracket located motor which has a good range and long battery life. The handlebar mounted display is simple to use with a handlebar mounted toggle switch to change between the functions and power settings. There is even a walk function for pedestrianised areas when dismounted.

Steps is available in combination with different gear options

Sram Duomatic 2 speeds auto change hub with Shimano rollerbrakes

Shimano Nexus 7 speed with Rollerbrakes.

Shimano Di2 8 speed hub with electronic gear changer and Shimano rollerbrakes
NuVinci continuously variable hub gear with rollerbrakes

Di2

The Di2 version is fully integrated with the motor and by means of electronic control the motor automatically reduces power slightly to enable electronic gear shifter to make a smooth change, the system is fully adjustable so it can be set to change down when coming to a halt and ensuring that you are in the right gear to set off again or you can choose to manually select the gears with the toggle switch on the handlebar.

Automatic Shifting

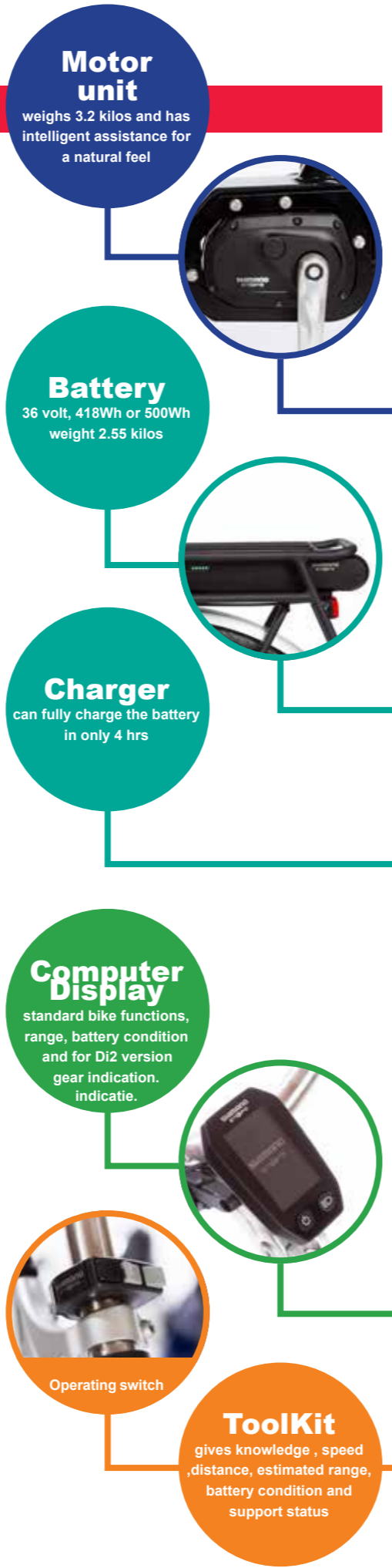
The combination of our drive unit and the Di2 internal gearhub enables you to use the fully automatic shifting function. Torque, speed and cadence are monitored to automatically and smoothly shift to the right gear. You can switch back to manual shift whenever you want.

→ Operating Range

How far can I go on a full battery? This is a difficult question to answer as it depends many things;

- Weight fully loaded of the cargobike or trike including the rider
- The terrain to be covered—flat—hilly or mountainous
- City or country environments will have a big influence, stopping and starting especially, the effort that the rider puts in to pedalling.
- The level of assistance chosen from the motor,
- The temperature, low temperatures have an adverse effect on the battery performance.

Typically the range can vary between 25km and 70km (or 15 and 50 miles), once you have driven for a while the on-board computer will estimate and display the potential range based on the journey so far.



Motor unit

weighs 3.2 kilos and has intelligent assistance for a natural feel



Battery

36 volt, 418Wh or 500Wh weight 2.55 kilos



Charger

can fully charge the battery in only 4 hrs

Computer Display

standard bike functions, range, battery condition and for Di2 version gear indication. indicatie.



Operating switch



ToolKit

gives knowledge , speed ,distance, estimated range, battery condition and support status





→ CargoBike Classic Short Steps

Identical and with all the features of the CargoBike Classic Short but with the Shimano steps motor mounted at the bottom bracket and the removable battery integrated in the back carrier rack. The motor senses rotation, cadance and torque to give you smooth power assistance
Length 228cm x width 63cm



Colours: gloss black/bright red/matt granite



→ CargoBike Cruiser Short Steps

A stylish and sporty version Similar to the CargoBike Classic steps but with fat tyres for comfort, broad mudguards in matching frame colour, Brooks Aged leather saddle and handlebar grips, a retro style 35 lux headlight and Plateo rear light both. The battery is mounted on the back of the wooden box.
Length 228cm x width 63cm



Colours: gloss black/bright red/matt granite

→ Gear options available

- NN2:** Sram Duomatic 2 speeds auto change hub with Shimano rollerbrakes
- NN7:** Shimano 7 speed hub with Shimano rollerbrakes
- NN8:** Shimano Di2 8 speed hub with Di2 and Shimano rollerbrakes
- NNI:** NuVinci continuously variable hub gear with rollerbrakes



→ Accessories (see rear pages)



→ Gear options available

- NN2:** Sram Duomatic 2 speeds auto change hub with Shimano rollerbrakes
- NN7:** Shimano 7 speed hub with Shimano rollerbrakes
- NN8:** Shimano Di2 8 speed hub with Di2 and Shimano rollerbrakes
- NNI:** NuVinci continuously variable hub gear with rollerbrakes



→ Accessories (see rear pages)





→ CargoBike Classic Long Steps

Identical and with all the features of the CargoBike Classic Long but with the Shimano steps motor mounted at the bottom bracket and the removable battery integrated in the back carrier rack. The motor senses rotation, cadance and torque to give you smooth power assistance
Length 253cm x width 63cm



Colours: matt black/petrolblue/matt granite/crème/bright red



→ CargoBike Cruiser Long Steps

Similar to the CargoBike Classic long steps but a stylish and sporty version with fat tyres for comfort, broad mudguards in matching frame colour, Brooks Aged leather saddle and handlebar grips, a retro style 35 lux headlight and Plateo rear light both. The battery is mounted on the back of the wooden box.
Length 253cm x width 63cm



Colours: matt black/petrolblue/matt granite/crème/bright red



→ Gear options available

- NN2:** Sram Duomatic 2 speeds auto change hub with Shimano rollerbrakes
- NN7:** Shimano 7 speed hub with Shimano rollerbrakes
- NN8:** Shimano Di2 8 speed hub with Di2 and Shimano rollerbrakes
- NNI:** NuVinci continuously variable hub gear with rollerbrakes



→ Accessories (see rear pages)



→ Gear options available

- NN2:** Sram Duomatic 2 speeds auto change hub with Shimano rollerbrakes
- NN7:** Shimano 7 speed hub with Shimano rollerbrakes
- NN8:** Shimano Di2 8 speed hub with Di2 and Shimano rollerbrakes
- NNI:** NuVinci continuously variable hub gear with rollerbrakes



→ Accessories (see rear pages)





→ **Shadow Steps** **new**

The Shadow is the top model of Bakfiets.nl. With its Aluminum frame, Shimano Steps mid-engine, aluminum profile box with trampoline fabric, this model is light and super stiff. This makes cycling on this cargo bike a natural experience. The aluminum frame is made of double-walled spiderweb tube. The hydraulic brakes and strong rims make the Shadow very stable and safe. The dimension of the box is equal to the Cargobike long, so most accessories fits simply.
 Sizes Shadow Steps: length 253cm x width 63cm.
 Available 2nd quarter 2018

→ ●
 colours: Matt Black



→ **Gear option**

- MM7:** Shimano 7 speed hub with magura brakes in front and rear
- MM8:** Shimano 8 speed hub with magura brakes in front and rear
- MMi:** NuVinci continuously variable hub with magura brakes in front and rear

→ **Accessories**
 (see rear pages)



→ **CargoTrike Classic Narrow Steps**

With the Shimano Steps electric assistance carrying a heavy load becomes easy. The walk function is often very handy in pedestrian areas.
 Length 210cm x width 85cm
 bottom surface: 86 x 54 cm

→ ● ● ●
 colours : bright red/matt black/ matt granite



→ **Gear options available**

- NN2:** Sram Duomatic 2 speeds auto change hub with Shimano rollerbrakes
- NN7:** Shimano 7 speed hub with Shimano rollerbrakes
- NN8:** Shimano Di2 8 speed hub with Di2 and Shimano rollerbrakes
- NNi:** NuVinci continuously variable hub gear with rollerbrakes

→ **Accessories**
 (see rear pages)





→ CargoTrike Classic Wide Steps

All trikes are equipped with steering stabilizer. This gives a stabil steering and prevents sudden change of direction when one wheel hits a small rock. With the Shimano Steps electric assistance carrying heavy load becomes easy. The walk function is often very handy in pedestrianised areas.

Length 210cm x width 85cm
bottom surface: 86 x 65 cm



colours : matt black/bright red/matt granite



→ Gear options available

NN2: Sram Duomatic 2 speeds auto change hub with Shimano rollerbrakes

NN7: Shimano 7 speed hub with Shimano rollerbrakes

NN8: Shimano Di2 8 speed hub with Di2 and Shimano rollerbrakes

NNI: NuVinci continuously variable hub gear with rollerbrakes

→ Accessories (see rear pages)



→ CargoTrike Cruiser Wide Steps

The wide version of the trike is 10cm wider than the Narrow model and with this it also gives more stability during the ride.

With the Shimano Steps electric assistance carrying heavy load becomes easy. The walk function is often very handy in pedestrianised areas. This model has plenty of space for freight or children and can be fitted with benches and seat belts in the length to increase seating for up to 6 children, there is also a handy step to help them get in and out of the box.

Length 210cm x width 95cm
bottom surface: 86 x 65 cm



colours : matt black/bright red/matt granite



→ Gear options available

NN2: Sram Duomatic 2 speeds auto change hub with Shimano rollerbrakes

NN7: Shimano 7 speed hub with Shimano rollerbrakes

NN8: Shimano Di2 8 speed hub with Di2 and Shimano rollerbrakes

NNI: NuVinci continuously variable hub gear with rollerbrakes

→ Accessories (see rear pages)





➔ **Rickshaw** **new**

Drivers and passengers can talk to each other comfortably and enjoy the surroundings in peace. The Rickshaw is a fantastic way to explore the city. This electric Taxi is equipped with a Shimano Steps mid-engine, this makes it very durable and also much cheaper to use than a car (The battery is full again for 10 cent!). The Extendable footboard ensures that passengers can board safely. The Rickshaw is standard equipped with thick ventilating cushions. Optionally, the raincover and/or warm blanket can be ordered. The hood not only provides protection from the sun and rain, but also gives a cozy look. Sizes Rickshaw: length 290cm x width 102cm



➔ ● colour: bright red

➔ **Gear options available**

NNI: NuVinci continuously variable hub gear with rollerbrakes



Optional foot rug



Optional Raincover

➔ **Accessories**
(see rear pages)



➔ **CargoBike Long Business**

Especially for the CargoBike long, Bakfiets.nl has a flight case in the program, Ideal to deliver packages through the city or a solution for, for example, a handyman who can transport his tools. There is also a CargoBike Long model with a cool box.

➔ ●●●●●●
Colours:gloss black/bright red/petrolblue/matt black/matt granite/ivory/matt blue



Dimensions Flightcase: bottom: width 65cm x length 70cm, height 60 cm. on top the flightcase is 100cm long. max load: 80kg

➔ **These options are both available for electric as for non-electric Cargo-Bikes**

➔ **Accessories**
(see rear pages)



→ Options & accessories

- 1 Ventisit cushion single with backrest
- 2 Ventisit cushion double
- 3 Headrest
- 4 Thick single cushion black
- 5 Thin double cushion (*bench remains foldable*)
- 6 Maxi-cosi holder with bracket in box bottom
- 7 Maxi-cosi holder with brackets on bench
- 8 White woolly baby seat 0-9 months
- 9 White woolly toddler seat 9-18 months
- 10 Mounting bracket for baby/toddler seat
- 11 Bracket for mounting front Child seat on box bottom
- 12 Bracket for mounting front Child seat on bench

Accessories Cargobike short and long

- 13 Eyelet for chain/cable lock
- 14 Extra seat on steerer tube
- 15 Sunshade for both models
- 16 Locker under bench red wood colour
- 17 Locker under bench black wood colour

Accessories Cargobike short

- 18 Flat box cover black
- 19 Flat box cover red
- 20 Flat box cover crème
- 21 Rain tent black
- 22 Rain tent red
- 23 Rain tent crème
- 24 Fold up rain tent supports

Accessories Cargobike long

- 25 Flat box cover black
- 26 Flat box cover red
- 27 Flat box cover crème
- 28 Rain tent black
- 29 Rain tent red
- 30 Rain tent creme
- 31 Rain tent yellow
- 32 Rain tent silver
- 33 Roll-up tent with folding supports
- 34 Extra 5cm high tent with zip sides black
- 35 Extra 5cm high tent with zip sides crème
- 36 Cabrio tent black
- 37 Door panel in the side of the box (without mounting)
- 38 Dog bench and cage
- 39 Ventisit floor mat
- 40 Cover silver
- 41 Cover black heavy duty quality
- 42 Extra bench with 1 seatbelt red wood colour
- 43 Extra bench with 1 seatbelt black wood colour
- 44 Reduced bench black (children can sit lower in the box)

Accessoires Trike

- 45 Flat box cover black
- 46 Flat box cover red
- 47 Rain tent Wide black with zip sides and pole supports
- 48 Rain tent Narrow black with zip sides and pole supports (no photo)
- 49 Rain tent Wide crème with zip sides and pole supports
- 50 Rain tent Narrow crème with zip sides and pole supports (no photo)
- 51 Box lid with gas damper – wide trike only
- 52 Extra benches in the length with seatbelts for 6 children - wide trike only
- 53 All-over cover Trike
- 54 Flightcase on CargoTrike Wide



→ The best components

Bakfiets.nl only uses the highest quality components available and works with the producers to get the best results, many of these parts are specially designed and made exclusively for us.



Be advised: the mentioned prices are shop prices for **Netherlands** including 21%VAT
Transport and packaging costs can be added depending on country

	Page	NN2 (rollerbrake F+R and 2 v automate)	NN3 (rollerbrake F+R and 3 speed hub)	NN7 (rollerbrake F+R and 7 speed hub)	NR8 (rol F and coaster R 8 speed hub)	NN8 (rollerbrake F+R and 8 speed hub)	NNi (rollerbrake F+R and Nuvinci hub)	MM7 (Magura hydro F+R and 7v hub)	MM8 (Magura hydro F+R and 8v hub)	MMi (Magura hydro F+R and Nuvinci hub)	Steps electro engine, 418 Wh battery option 500Wh battery	Selle Royal 8261 saddle	A Selle Royal HZ saddle with lift grip	B Saddle Drifter black or brown	C Brooks B67 Aged leather saddle	D Quick release on seatpost	E Suspension seatpost quick adjust	F Suspension seatpost PM Parallel	G Big Apple tyre Creme	H Marathon tyre black	Marathon/Big Apple plus tyre black	Handle bar butterfly RVS	grips Ergo	I grips brown	J Brooks leather	K hydro brakes HS11 rear	L Hydro disc brake front with black fork	Bell Copper with bakfiets logo	Big Ding/Dong Bell	Headlight Nostalgic LED 40 lux	Headlight Power LED 35 lux auto	M Headlight sportive on battery on/off	Headlight AXA 70 lux with USB	Headlight B&M avy 30 lux	Hubdynamo	N Rear light on battery on/off	Rear light on dynamo with standlight	Lights attached to battery	O Rear carrier steel with strap	P ARear carrier steel yepp with strap	without rear carrier	Q Chainglider instead of closed chainguard (does not fit on Nuvinci)	R Stainless steel mudguards	S Mudguards in color of frame	T Wishcolor in RAL**	U Plastic mudguards with Stainless steel rods	Wood mudguards	V dress guard (void in combination HS11 brake)	Short box wood color (FSC approved)	Long box wood color (FSC approved)	Long box Black color (FSC approved)	Flightcase	ice cream box					
CargoBike Classic Short	2	-	1595	1679	1705	1749	1979	-	-	-	-	v	16	15	82	10	79	75	22	v	34	v	v	5	52	85	69	99	v	-	-	v	-18	75	-	v	v	35	-	v	33	22	-	29	v	39	150	29	100	v	-	-	-	-	-			
CargoBike Cruiser Short	3	-	1765	1849	1875	1919	2149	-	-	-	-	-	-66	-67	v	10	79	75	v	-	27	v	-	-	v	85	69	99	-	v	v	-	-18	75	-	v	-	v	-	-	63	50	v	29	-	v	150	29	100	-	v	-	-	-	-			
CargoBike Classic Long	4	-	1645	1729	1755	1799	2029	-	-	-	-	v	16	15	82	10	79	75	22	v	34	v	v	5	52	85	69	99	v	-	-	v	-18	75	-	v	v	35	-	v	33	22	-	29	v	39	150	29	100	v	-	v	29	1139	999			
CargoBike Cruiser Long	5	-	1815	1899	1925	1969	2199	-	-	-	-	-	-66	-67	v	10	79	75	v	-	27	v	-	-	v	85	69	99	-	v	v	-	-18	75	-	v	-	v	-	-	63	50	v	29	-	v	150	29	100	-	v	-	-	-	-			
CargoBike XL only with flatbed	7	-	-	1729	-	1799	2029	-	-	-	-	v	16	15	82	10	79	75	22	v	27	v	v	5	52	85	69	99	v	-	-	v	-18	75	-	v	v	35	-	v	33	22	-	29	v	39	150	29	100	v	-	-	-	-	-			
CargoBike XL with rack	7	-	-	1929	-	1999	2229	-	-	-	-	v	16	15	82	10	79	75	22	v	27	v	v	5	52	85	69	99	v	-	-	v	-18	75	-	v	v	35	-	v	33	22	-	29	v	39	150	29	100	v	-	-	-	-	-			
CargoBike XL with flightcase	7	-	-	3068	-	3138	3368	-	-	-	-	v	16	15	82	10	79	75	22	v	27	v	v	5	52	85	69	99	v	-	-	v	-18	75	-	v	v	35	-	v	33	22	-	29	v	39	150	29	100	v	-	-	-	v	-			
CargoTrike Classic Narrow	9	-	1965	2049	2075	2119	2349	-	-	-	-	v	16	15	82	10	79	75	33	v	51	v	v	5	52	95	-	-	v	-	-	v	-18	75	-	v	v	35	-	v	33	22	-	29	v	-	150	-	-	v	-	-	-	-	-			
CargoTrike Classic Wide	10	-	2015	2099	2125	2169	2399	-	-	-	-	v	16	15	82	10	79	75	33	v	51	v	v	5	52	95	-	-	v	-	-	v	-18	75	-	v	v	35	-	v	33	22	-	29	v	-	150	-	-	v	-	-	-	-	-			
CargoTrike Cruiser Wide	11	-	2165	2249	2275	2319	2549	-	-	-	-	-	-66	-67	v	10	79	75	v	-	41	v	-	-	v	95	-	-	-	v	v	-	-18	75	-	v	-	v	-	-	63	50	v	29	-	-	150	-	-	-	-	-	-	-	-			
CargoBike Classic Steps Short	14	3269	-	3345	-	3619	3645	-	-	v	175	v	16	15	82	10	79	75	22	v	34	v	v	5	52	85	69	99	v	-	-	v	-	-	-	-	-	-	-	v	v	-	-	-	-	v	39	150	29	100	v	-	v	29	-	-		
CargoBike Cruiser Steps Short	15	3269	-	3345	-	3619	3645	-	-	v	175	-	-66	-67	v	10	79	75	v	-	27	v	-	-	v	85	69	99	-	v	v	-	-	-	-	-	-	-	-	v	-	-	-	-	-	v	-	-	v	150	29	100	-	-	v	29	-	-
CargoBike Classic Steps long	16	3319	-	3395	-	3669	3695	-	-	v	175	v	16	15	82	10	79	75	22	v	34	v	v	5	52	85	69	99	v	-	-	v	-	-	-	-	-	-	-	-	v	-	-	-	v	39	150	29	100	v	-	v	29	1139	999			
CargoBike Cruiser Steps long	17	3319	-	3395	-	3669	3695	-	-	v	175	-	-66	-67	v	10	79	75	v	-	27	v	-	-	v	85	69	99	-	v	v	-	-	-	-	-	-	-	-	-	-	v	-	-	-	v	150	29	100	-	-	v	29	-	-			
CargoBike Steps Shadow	18	-	-	-	-	-	-	3999	4275	4399	v	-	-	-	66	v	79	75	-	-	v	v	v	5	52	v	v	-	-	-	-	-	-	-	-	-	v	-	-	-	-	-	-	-	v	-	-	-	v	150	29	100	-	-	-	-	-	-
CargoTrike Classic Narrow Steps	19	3639	-	3715	-	3989	4015	-	-	v	175	v	16	15	82	10	79	75	33	v	51	v	v	5	52	95	-	-	v	-	-	v	-	-	-	-	-	-	-	-	-	-	-	-	-	v	-	-	150	-	-	v	-	-	-	-	-	
CargoTrike Classic Steps Wide	20	3689	-	3765	-	4039	4065	-	-	v	175	v	16	15	82	10	79	75	33	v	51	v	v	5	52	95	-	-	v	-	-	v	-	-	-	-	-	-	-	-	-	-	-	-	-	v	-	-	150	-	-	v	-	-	-	-	-	
CargoTrike Cruiser Steps Wide	21	3769	-	3845	-	4119	4145	-	-	v	175	-	-66	-67	v	10	79	75	v	-	41	v	-	-	v	95	-	-	-	v	v	-	-	-	-	-	-	-	-	-	-	-	-	-	-	v	-	-	63	50	v	-	-	-	-	-	-	
Rickshaw	22	-	-	-	-	-	4749	-	-	v	175	v	16	15	82	v	79	75	v	v	27	v	v	5	52	95	-	-	-	v	-	v	-	75	-	-	-	-	-	-	-	-	-	-	-	-	-	-	-	-	-	-	-	-	-	-	-	-

Legenda: v = standard on bike, - = not possible option, amount = upprice for option in holland, *1 = only possible on bike with hub dynamo

**lead time uncertain

Custom made

You can customise your Cargobike or Cargotrike with most of the upgrade options shown and see on this chart below the compatability with your model.

The best materials

All Bakfiets.nl Cargobikes and Cargotrikes have stainless steel nuts and bolts, handlebar stem, control cables and spokes – aluminium crank set, pedals and super strong double wall rims to give you years of trouble free riding pleasure.

Bakfiets.nl thanks their suppliers:



Your bakfiets dealer

No liability accepted for errors or misprints! www.bakfiets.nl